

Summary – December 2025

East Providence Bicycle and Pedestrian Master Plan

Quinn Molloy, PhD; Project Manager
Toole Design Group



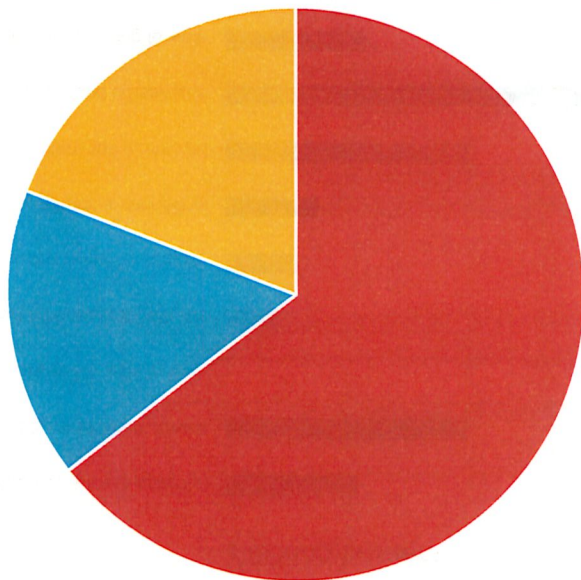
Project Overview

- Summer 2024 – Winter 2026
 - Analysis
 - Engagement
 - Prioritization
 - Recommendations
- Draft Plan target December 2025



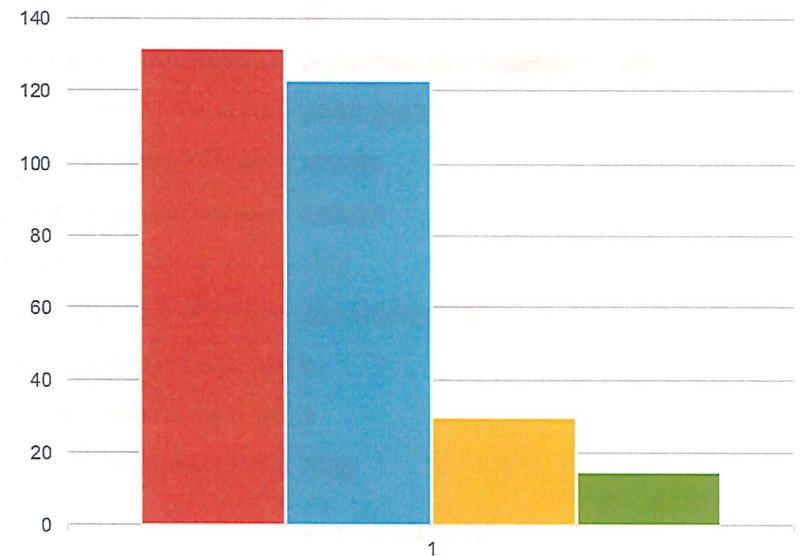
People in the city are interested in walking and biking

I bike, walk, or use alternative transportation modes regularly in East Providence.



■ Yes ■ No ■ No, but I would if I were able

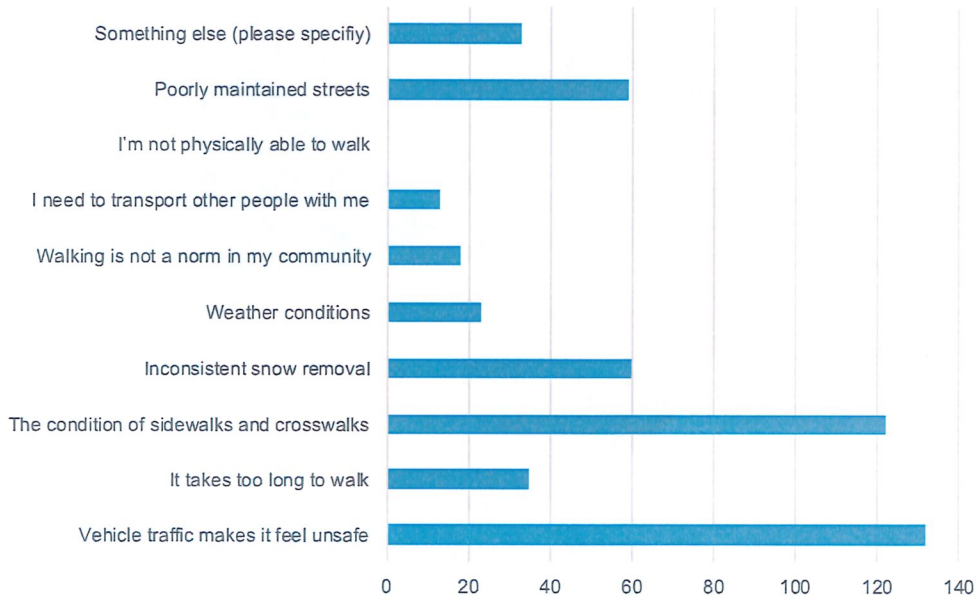
I would like to _____ more.



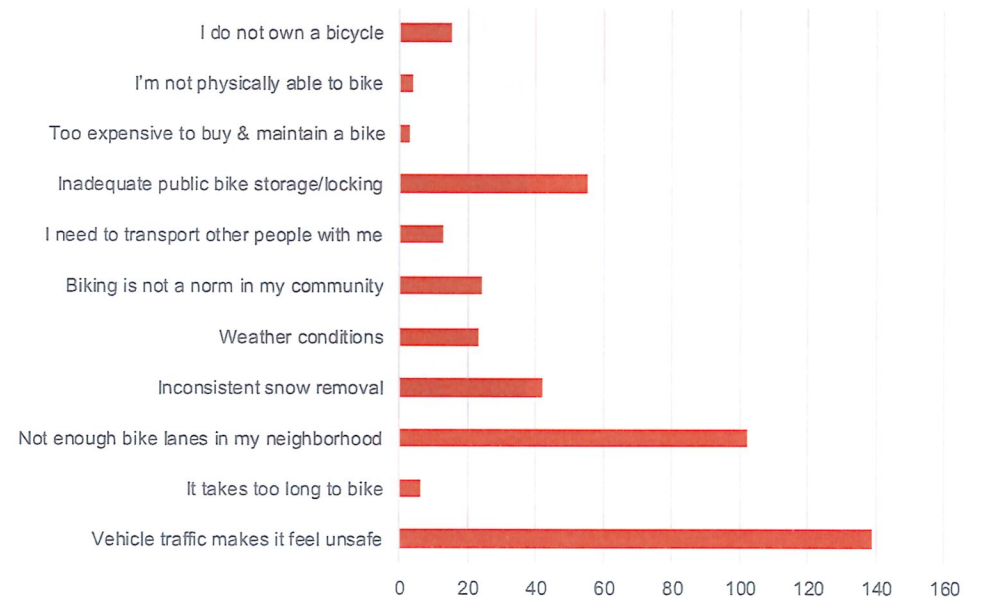
■ Bike ■ Walk ■ Roll ■ None

Vehicle traffic makes people feel unsafe

Walking barriers



Biking barriers



Vehicle traffic makes people feel unsafe

*“There are no signs or crosswalks for the new playground on Pawtucket Ave. Cars speed regularly and this summer there was a hit and run on the road. **We need a crosswalk, signage, and speed management like speed bumps to keep kids and people visiting the community center safe.**”*

*“The drivers in East Providence are the main problem. They do not stop for pedestrians in crosswalks. **There needs to be middle of the road signage/raised crosswalks/flashing lights, etc especially around libraries, bus stops, and schools[...]**”*



Sidewalk Quality & Connectivity

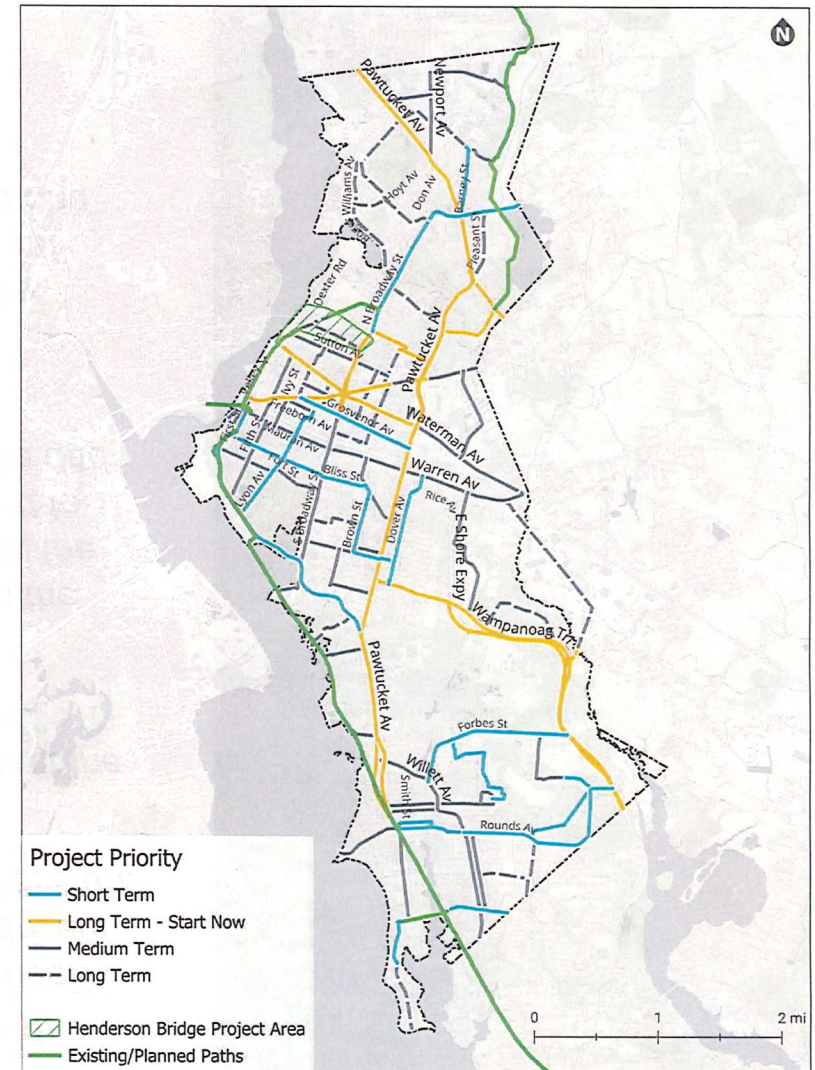
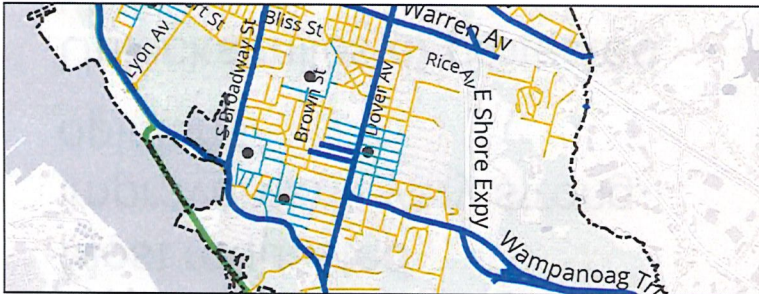
- Sidewalk connectivity gaps
- Unclear crossing points
- Parking on sidewalks
- Sidewalk condition
- Sidewalk blockages



"I love East Providence but think we have a lot of room for improvement with increasing the accessibility of our sidewalks. In the areas I mentioned, it's disappointing to see how broken and uneven the sidewalks can be. I am able-bodied but frequently see senior citizens in wheelchairs from the senior community needing to use the road because they are unable to use the sidewalks."

Short Term Recs

- Infrastructure recommendation types:
 - Short term projects
 - High priority sidewalk connectivity streets within 1/8 mile of a school, then within 1/8 mile of a transit stop.



First St

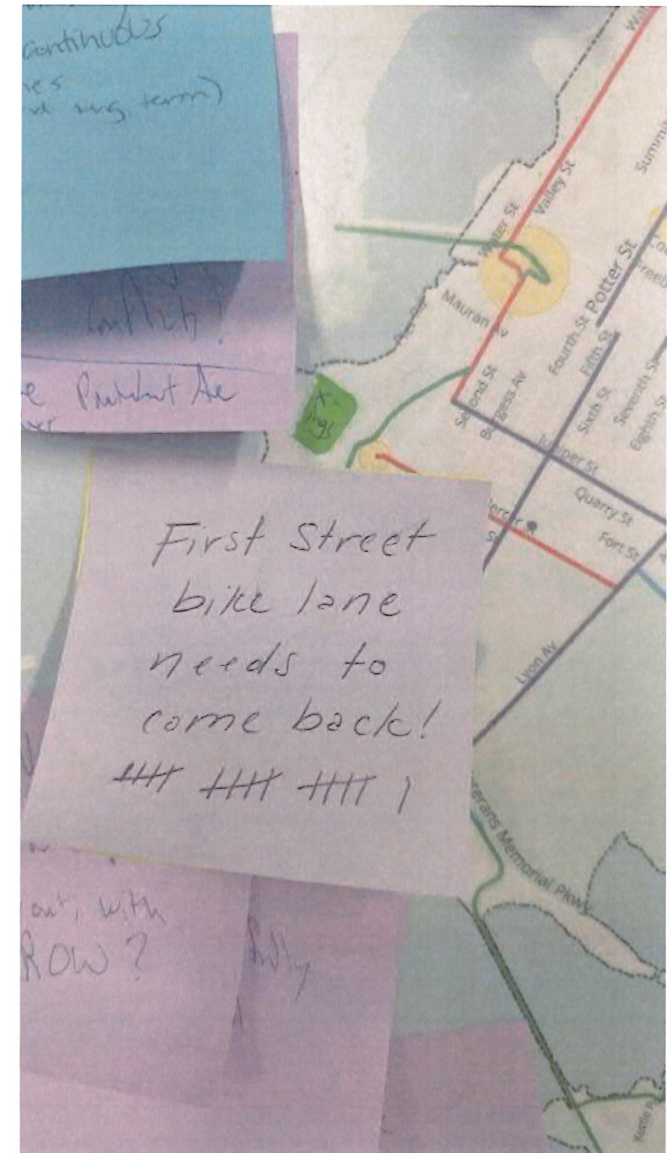
- Most requested improvement, very strong opinions
- Unlocks miles of protected bikeway
- Efficient
- Potential to increase bike commuters (congestion alleviation)

"It's ridiculous the 1st St connector has never been revived and that car drivers were allowed to kill that plan."

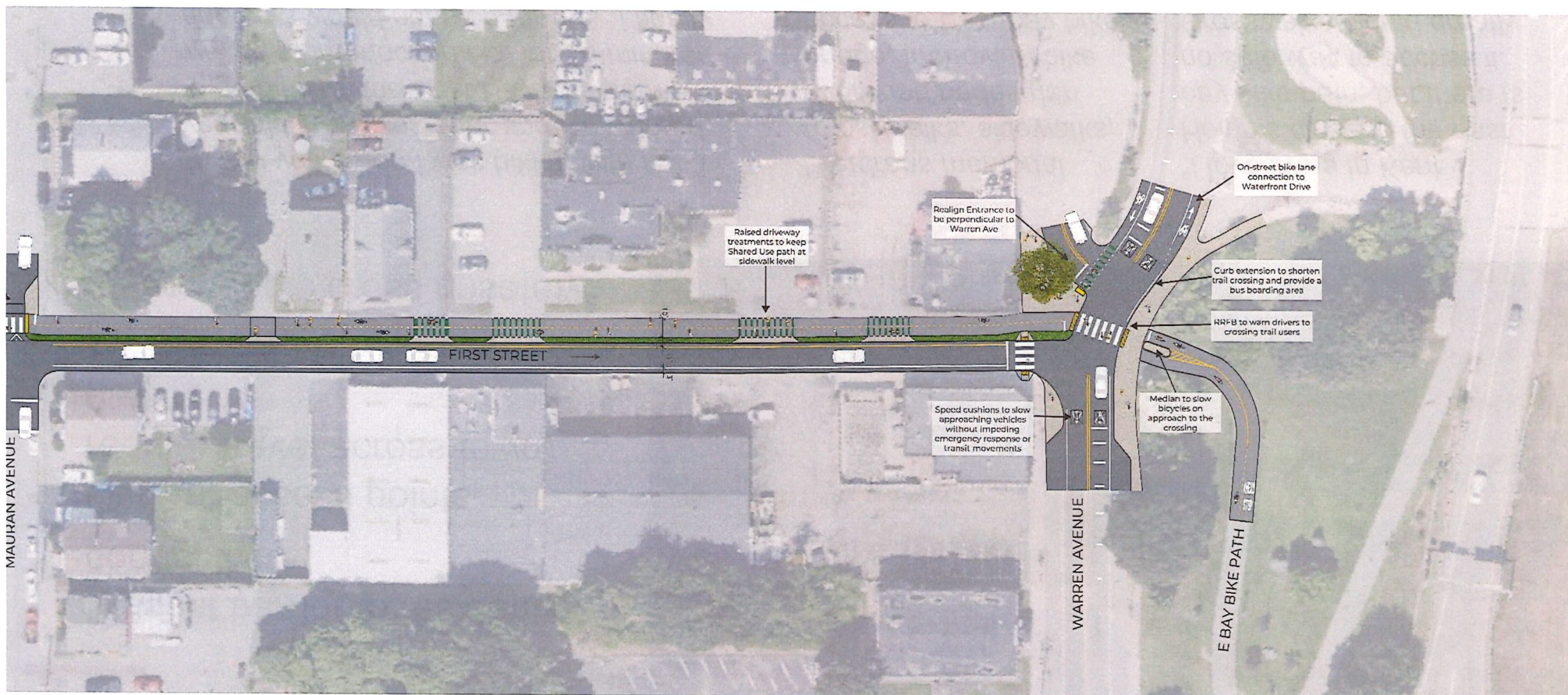
"Please pave to connect the bike lane on 1st street."

"I wish 1st st between the east bay bike path and the pedestrian bridge (next to 195) was safer for bike and pedestrians"

"Make a protected bike lane between first Street and the George Redmond Bridge to Providence"



First Street



Veteran's Memorial

- Biggest barrier to residential connectivity
- Current access points require travel across town, driving
- No safe crossing points mean people cross unsafely

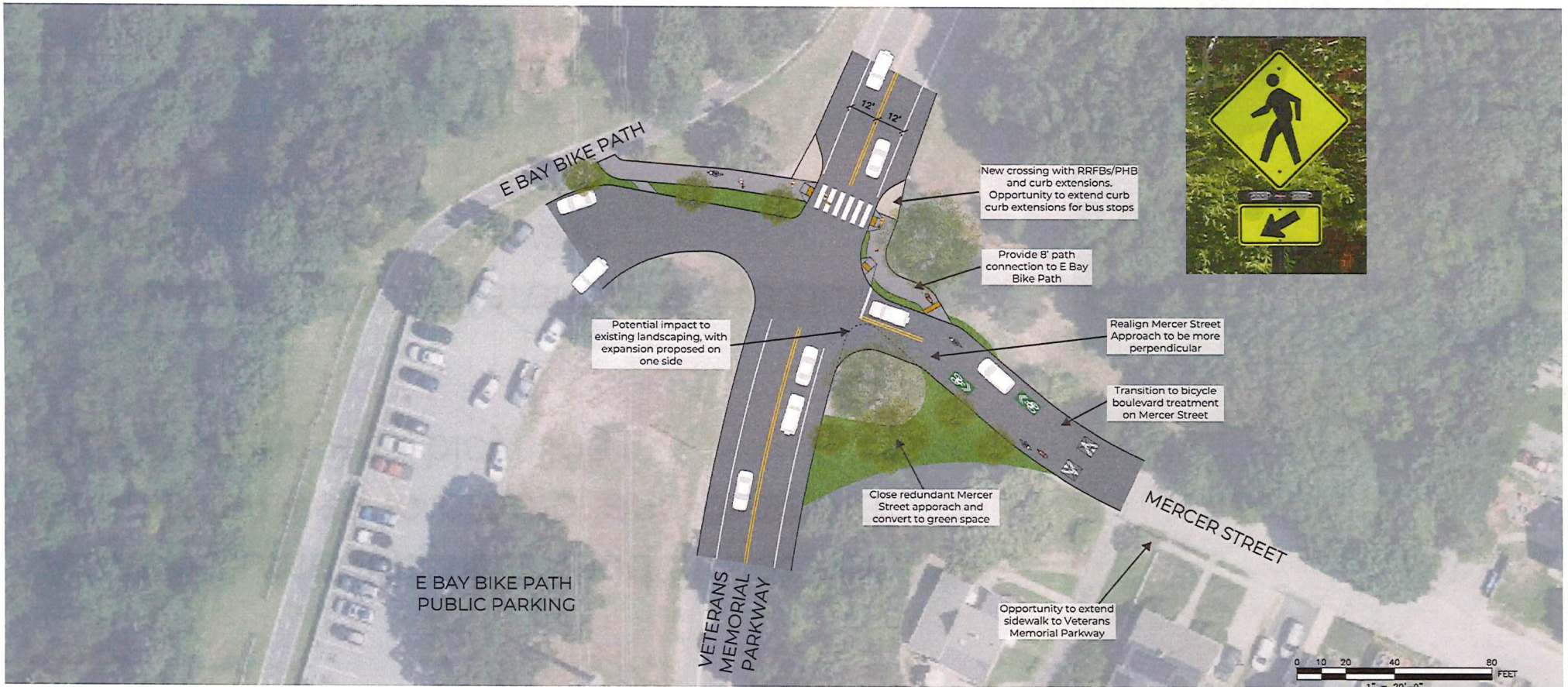


"A few years ago I was biking with my 3 year old in a bike trailer and we wanted to go bike on the East Bay bike path. I waited at Interlocken Rd. for 10 minutes and cars would not stop for me. I finally decided to go home."

"Veterans memorial (crosswalks, sidewalks, over road pedestrian bridge, improving bike access to East bay bike path)"

"I love living in Kent Heights close to the east bay bike path, but there is no safe way to access it. Crosswalks would greatly improve safety and access."

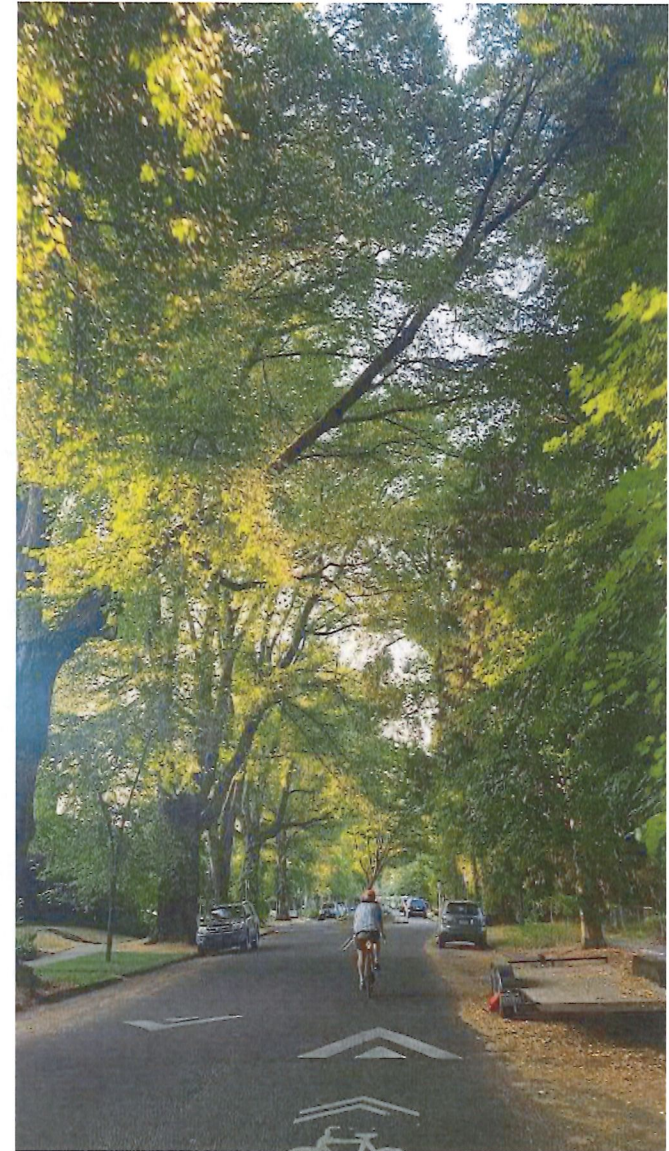
Veteran's Memorial Parkway



Neighborhood Greenways

A low-volume neighborhood street that has been improved to protect and promote safe walking and bicycling

There are lots of different ways to build a Neighborhood Greenway!



Neighborhood Greenways

Should have:

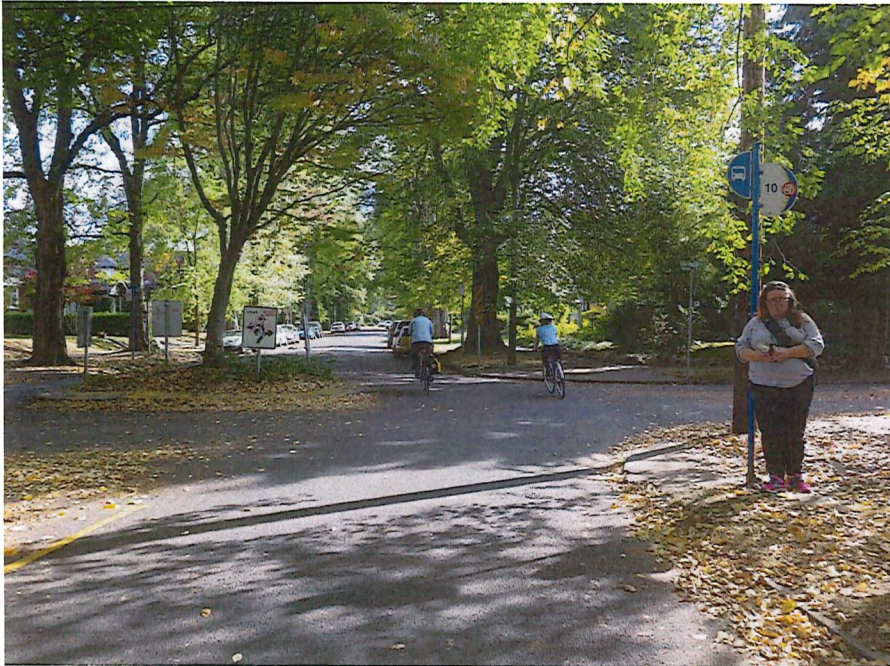
- Shared lane markings
- Daylighting
- Traffic calming
- Wayfinding
- No centerlines midblock



Neighborhood Greenways



Neighborhood Greenways



TOOLE DESIGN

TOOLE
DESIGN

Neighborhood Greenways

Neighborhood Greenways



Bicycle and Pedestrian Advisory Committee

- Standing body of local stakeholders who will support bike/ped projects and policy development
- Similar groups in Providence, Aquidneck Island
- Leans on deep pool of local talent



Wampanoag Trail Reclassification

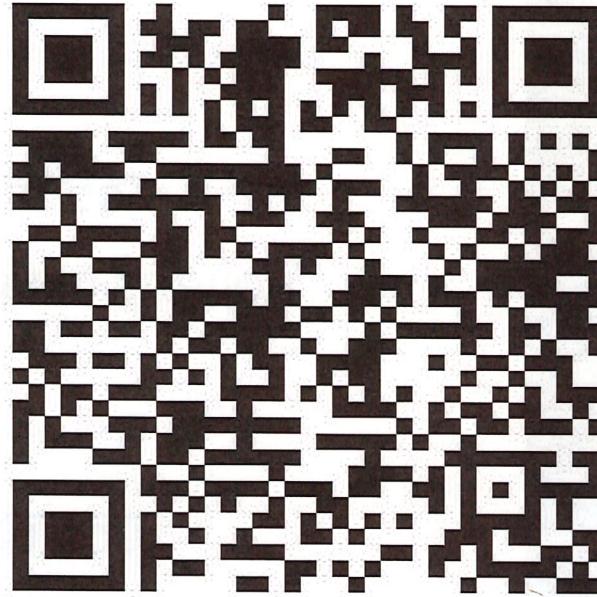
- Freeway to Arterial Federal Functional Classification
 - Recent fatal bicycle crash, high risk transit stops, land-use mismatch
- First steps to building a safe crossing on Wampanoag Trail

“Wampanoag is an accident waiting to happen”



*“There are no crossings whatsoever of Wampanoag Trail, preventing safe or accessible inbound access to the #60 route [...]. **I have had to sprint across the four-lane highway many times and have never felt safe doing so.**”*

Send us pictures to use in the plan



<https://forms.gle/uDZBY7eSWPLYvXpN8>

Contact Information

- Quinn Molloy
 - Toole Design Group
 - gmolloy@tooledesign.com
- Joshua O'Neill
 - RI Department of Administration
 - Joshua.ONeill@doa.ri.gov

