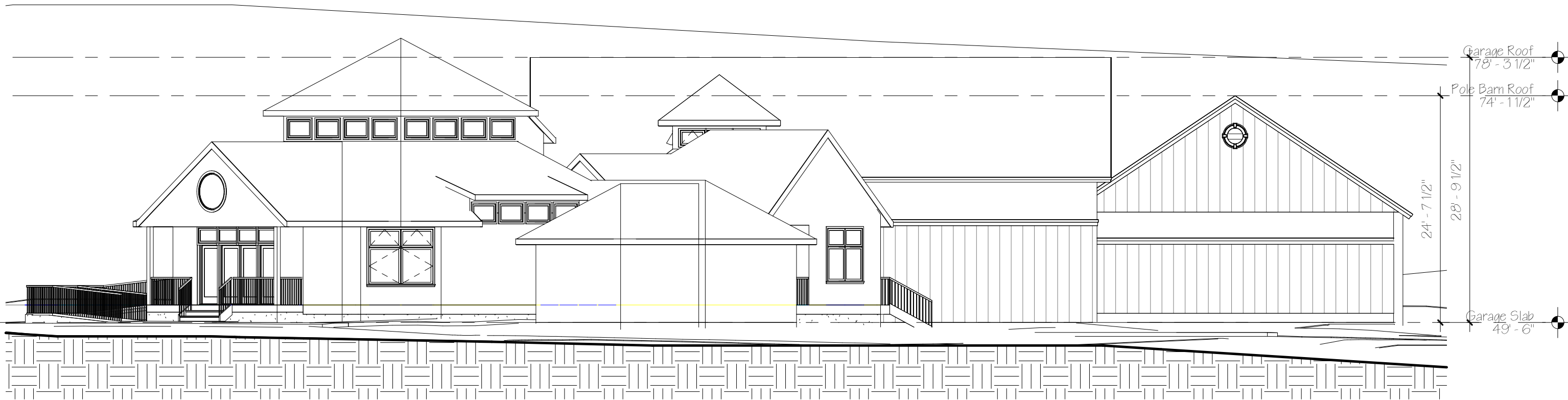


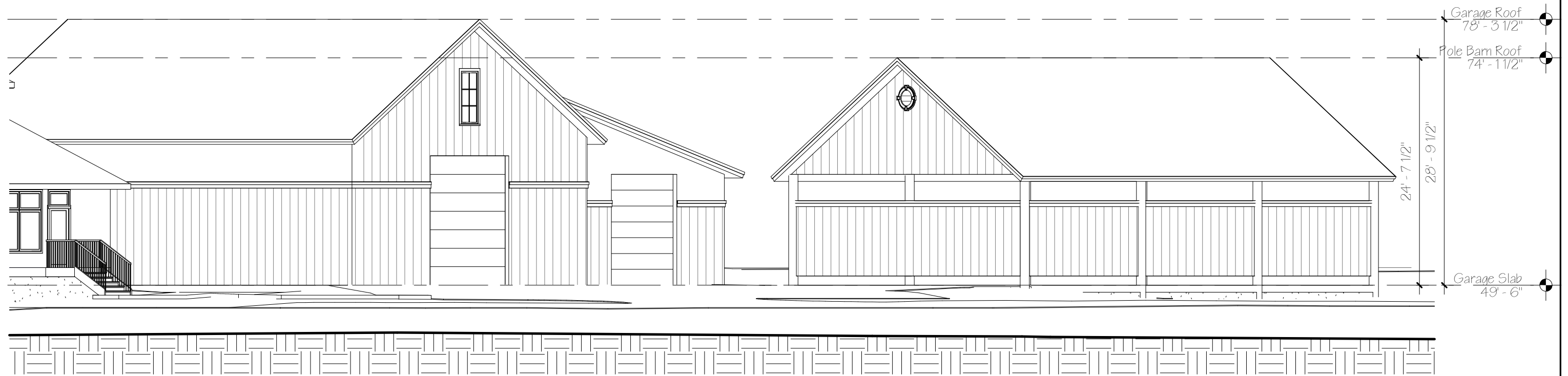


South East Elevation

3/32" = 1'-0"

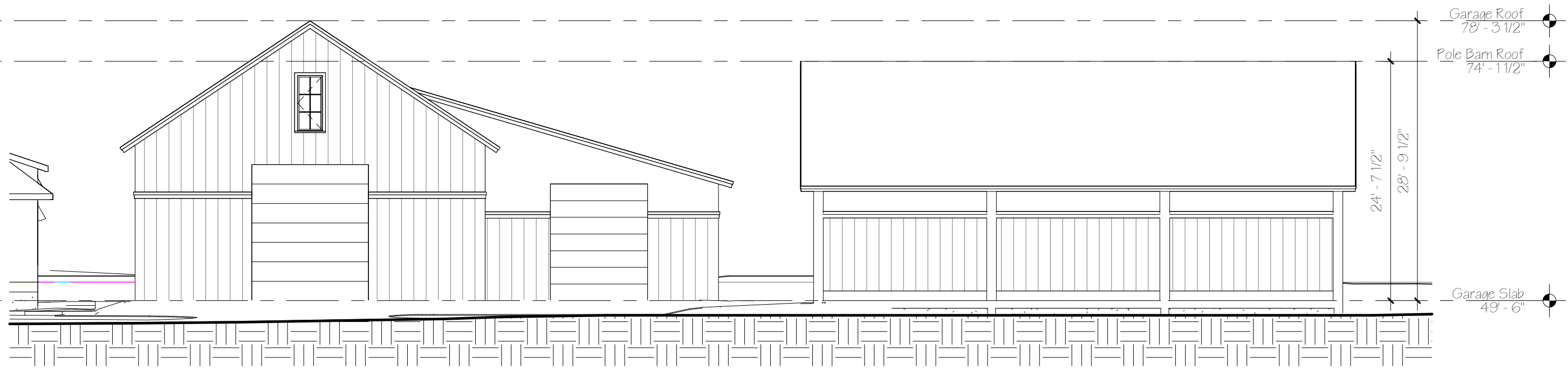


East Elevation
3/32" = 1'-0"



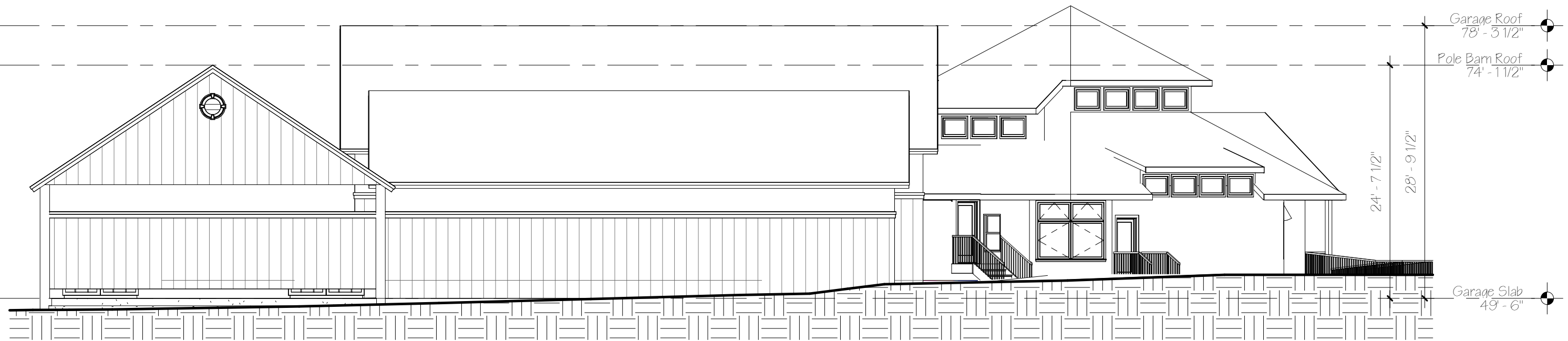
North Elevation

3/32" = 1'-0"



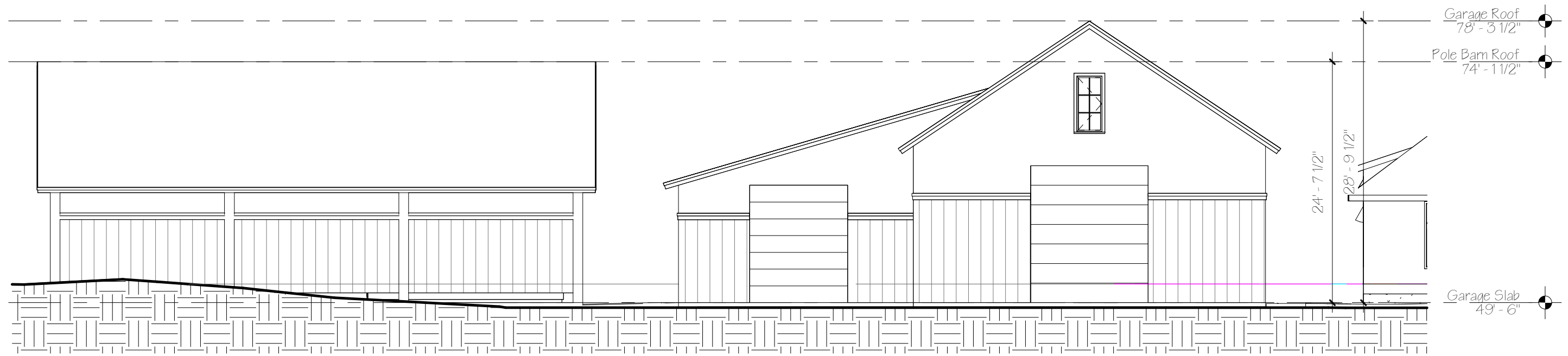
North West Elevation

3/32" = 1'-0"



West Elevation

$\frac{3}{32}'' = 1'-0''$



South Elevation

$3/32'' = 1'-0''$



TOWN OF WESTERLY, RI
OFFICE OF TOWN CLERK

Feb 19 2025

RECEIVED
Mary L. LeBlanc, MMC
Town Clerk

